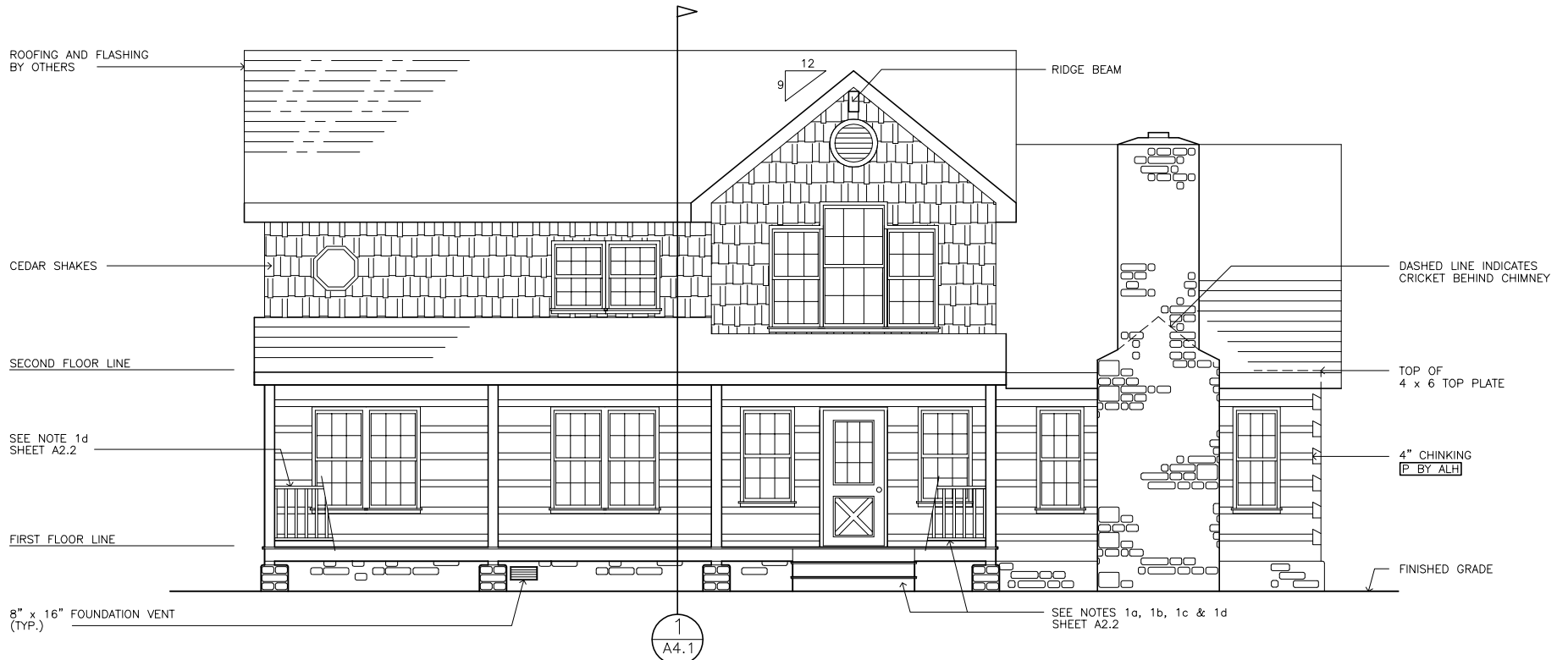




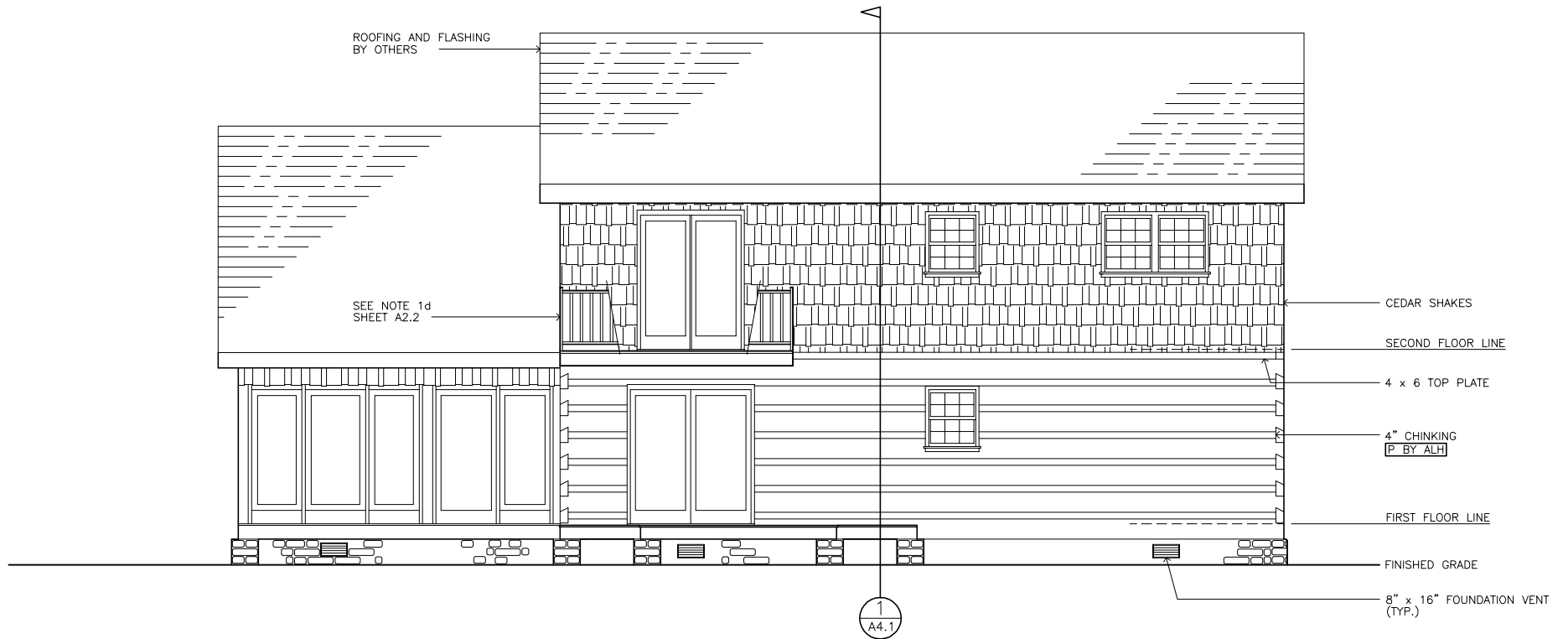
CEDAR RIDGE 2500 4/3



1 FRONT ELEVATION  
A3.1 SCALE: 1/8" = 1'-0"

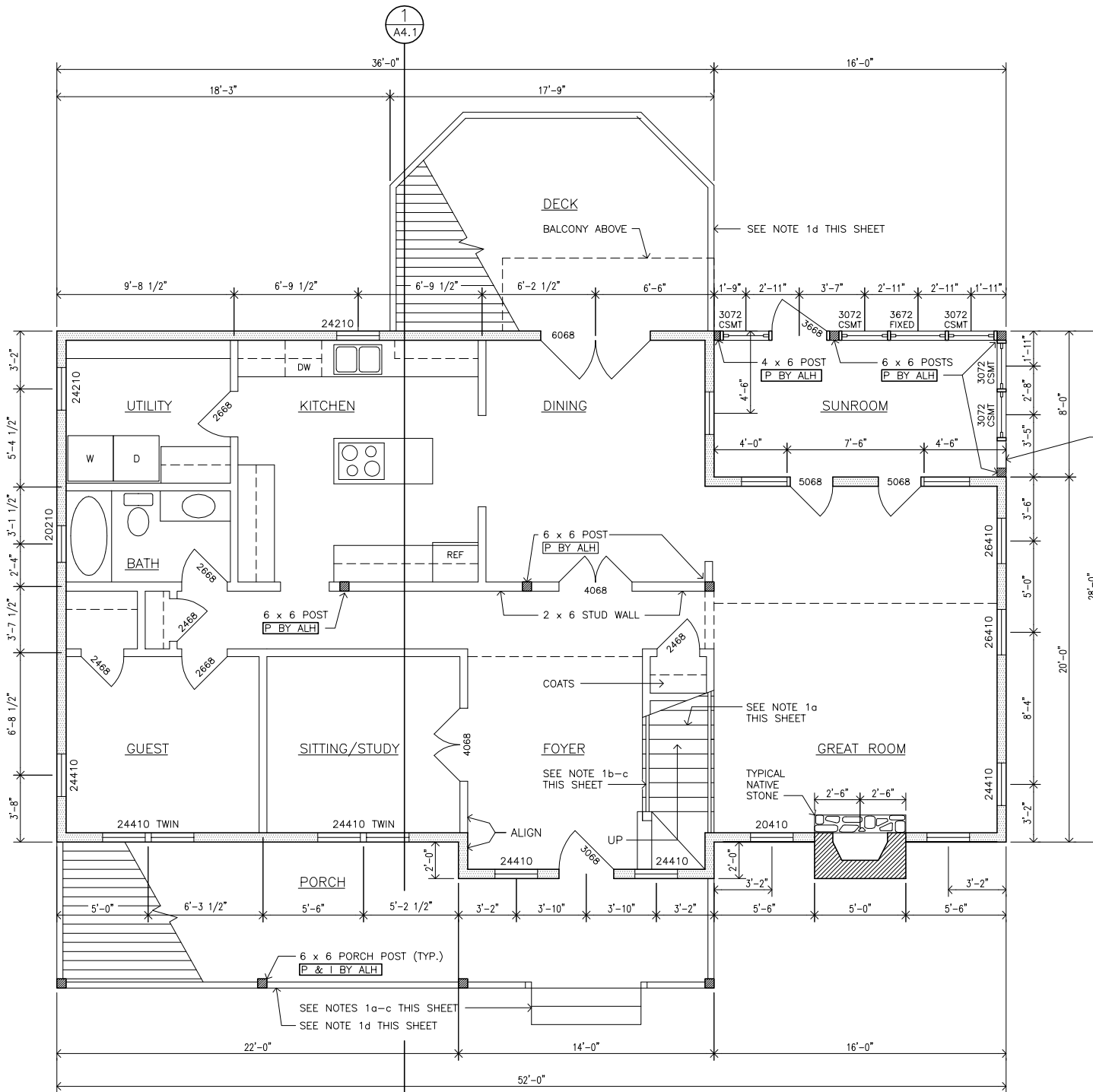
**CEDAR RIDGE**

COPYRIGHT 2004: This document has been prepared exclusively for Appalachian Log Homes, Inc. Any reproduction and or reuse of this document without the express written consent of Appalachian Log Homes is prohibited and unlawful



1 REAR ELEVATION — CEDAR RIDGE  
 A3.2 SCALE: 1/8" = 1'-0"

COPYRIGHT 2004: This document has been prepared exclusively for Appalachian Log Homes, Inc. Any reproduction and or reuse of this document without the express written consent of Appalachian Log Homes is prohibited and unlawful



**NOTE:**  
 SUNROOM DOORS AND WINDOWS ARE BY PEACHTREE WINDOWS. DESIGNATIONS ARE IN INCHES:  
 \*3072\* INDICATES 30" x 72"  
 \*CSMT\* INDICATES CASEMENT WINDOW.

THIS SECTION STICK-FRAME CONSTRUCTION

**CEDAR RIDGE**

1  
A2.2

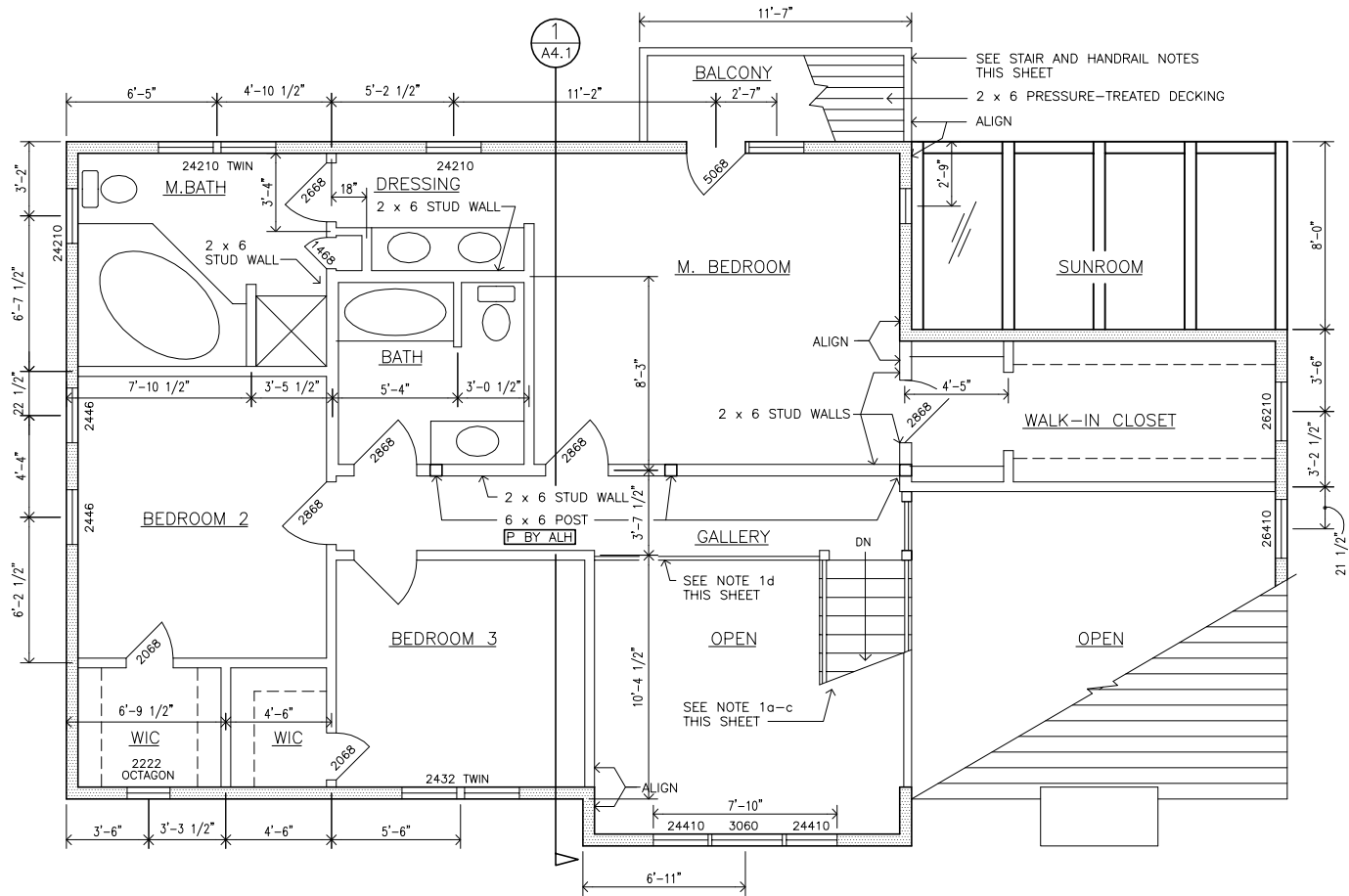
FIRST FLOOR PLAN

1484 S.F.

SCALE: 1/8" = 1'-0"

(2502 S.F. TOTAL)

COPYRIGHT 2004: This document has been prepared exclusively for Appalachian Log Homes, Inc. Any reproduction and or reuse of this document without the express written consent of Appalachian Log Homes is prohibited and unlawful



**CEDAR RIDGE**

1 SECOND FLOOR PLAN 1018 S.F.  
 A2.2 SCALE: 1/8" = 1'-0" (2502 S.F. TOTAL)

COPYRIGHT 2004: This document has been prepared exclusively for Appalachian Log Homes, Inc. Any reproduction and or reuse of this document without the express written consent of Appalachian Log Homes is prohibited and unlawful