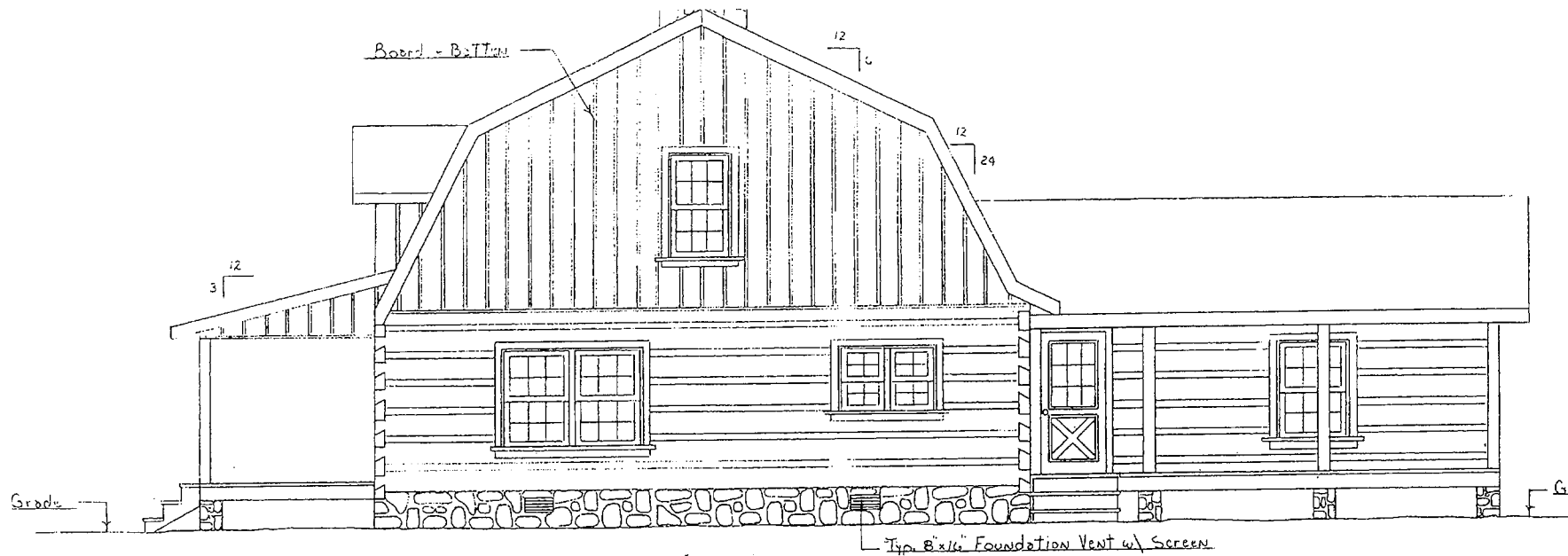
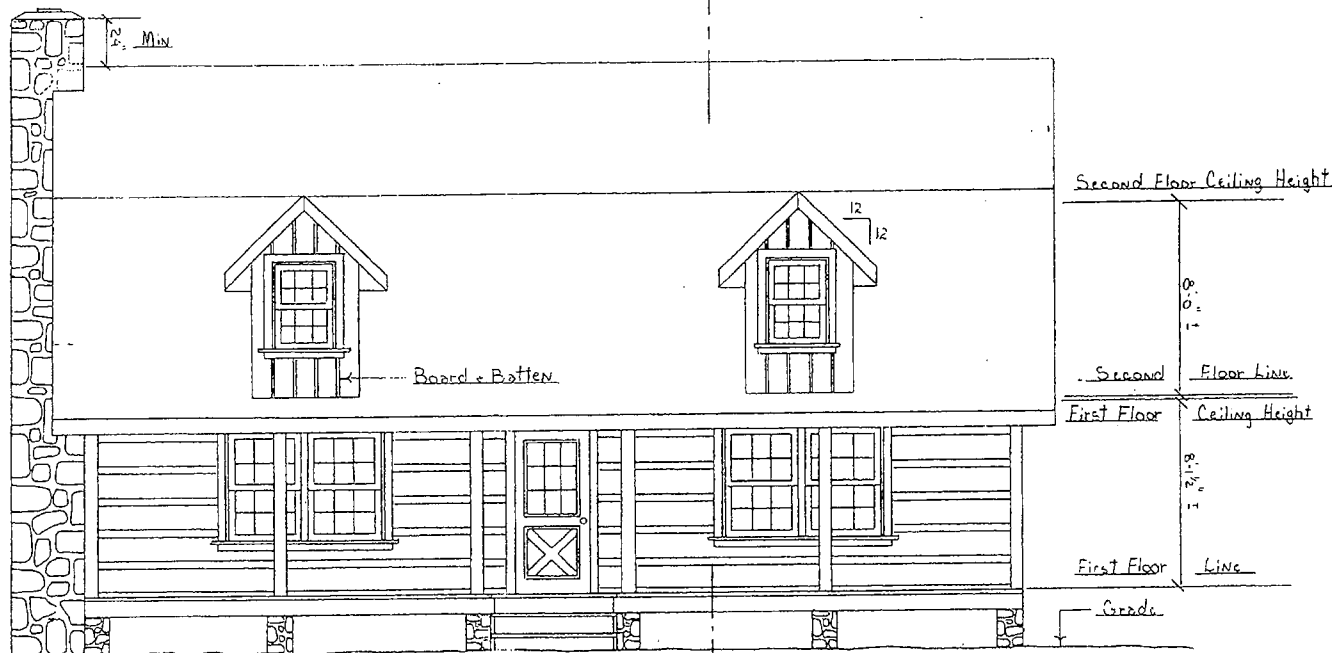


OVERLAND TRAIL





(B) RIGHT ELEVATION

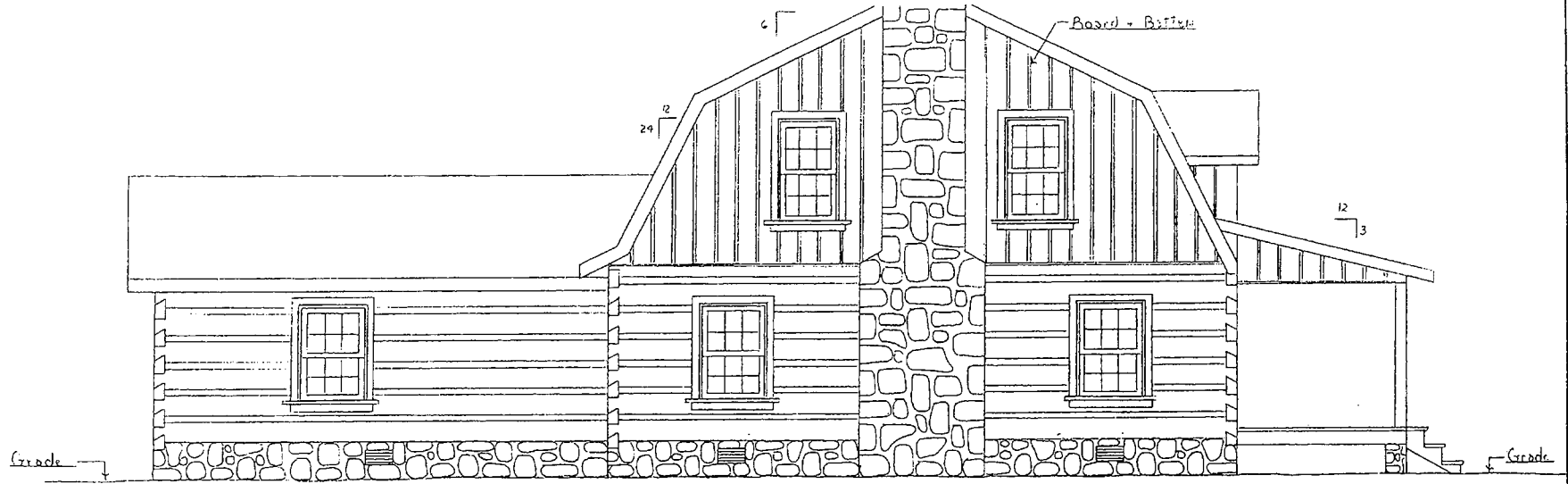


DO NOT SCALE PRINTS - WORK TO ALL DIMENSIONS

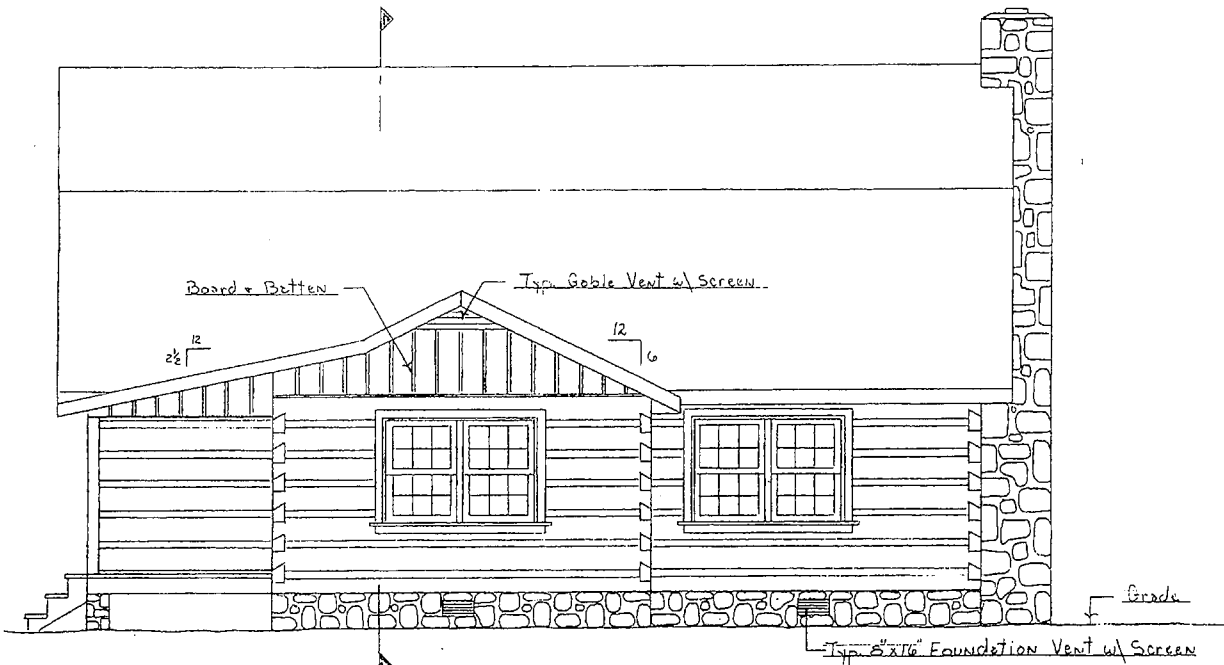
OVERLAND TRAIL

SCALE: 1/4" = 1'-0"	APPROVED BY	DRAWN BY
DATE: 7-21-82		Revised

ADRIAN AQUILANT



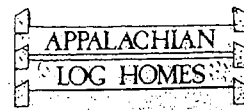
(B) LEFT ELEVATION

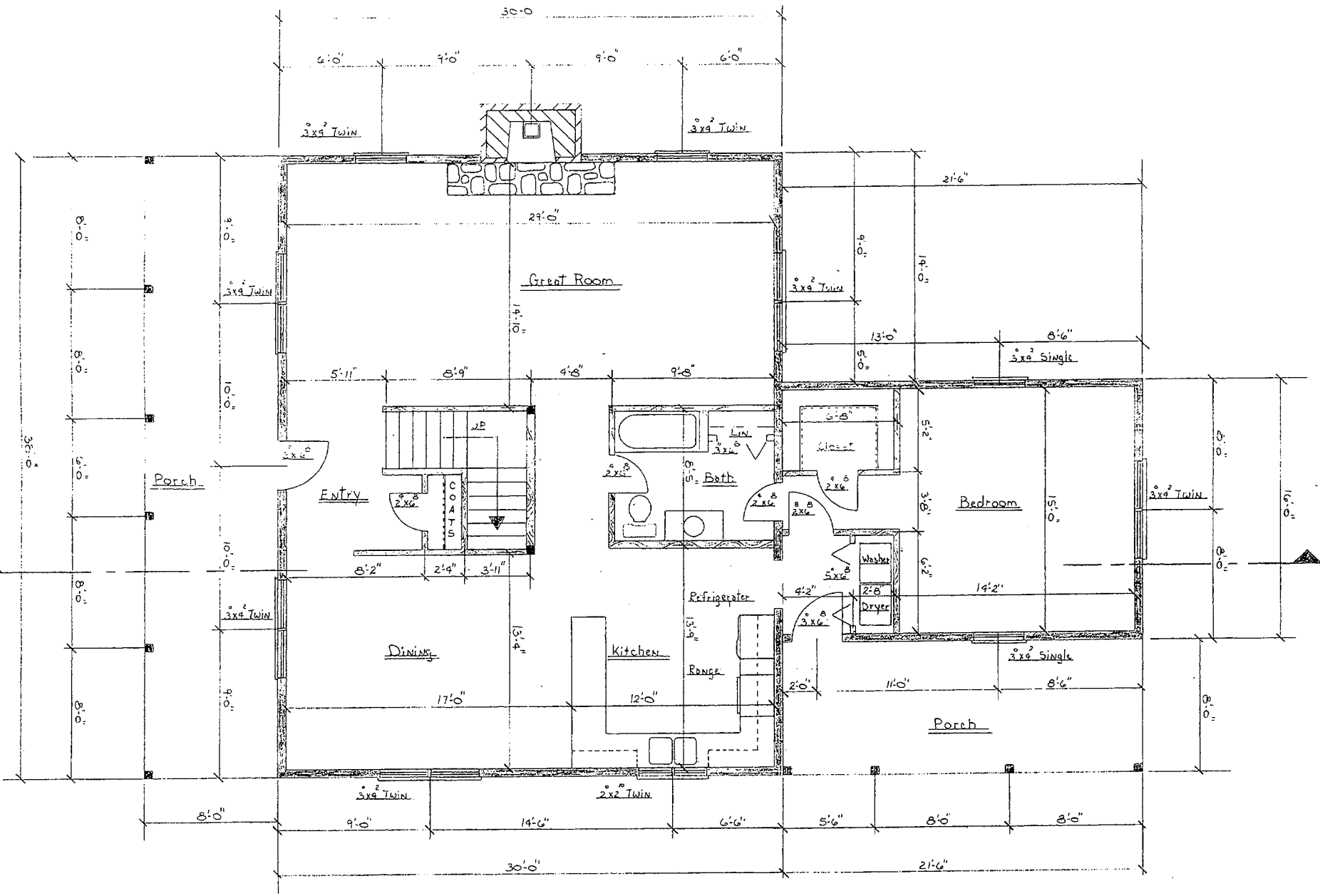


(A) BACK ELEVATION

DO NOT SCALE PRINTS - WORK TO ALL DIMENSIONS

OVERLAND TRAIL	
SCALE: 1/4" = 1'-0"	APPROVED BY
DATE: 7-21-82	DRAWN BY
	Revised: 3/2/92
	DRAWING NUMBER
	A-2





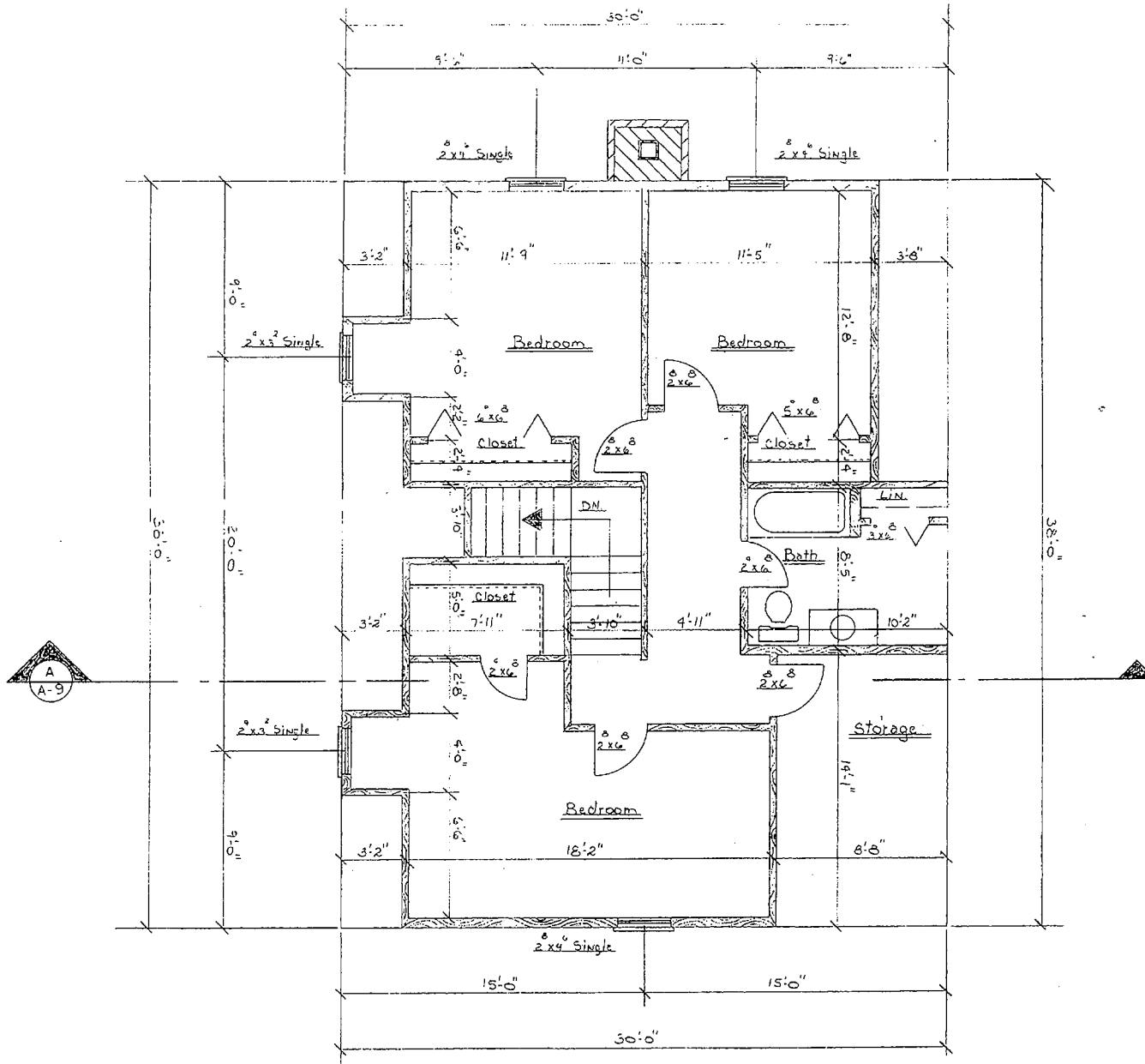
A

FIRST FLOOR FRAMING

DO NOT SCALE PRINTS - WORK TO ALL DIMENSIONS

OVERLAND TRAIL		APPROVED BY	DRAWN BY
SCALE: 1/4" = 1'-0"	DATE: 7-21-82		Revised: 3/1/92





A SECOND FLOOR FRAMING

DO NOT SCALE PRINTS - WORK TO ALL DIMENSIONS

OVERLAND TRAIL

SCALE: 1/4" = 1'-0" APPROVED BY

DRAWN BY
Revised: 3/2/92

DATE: 7-2-82



